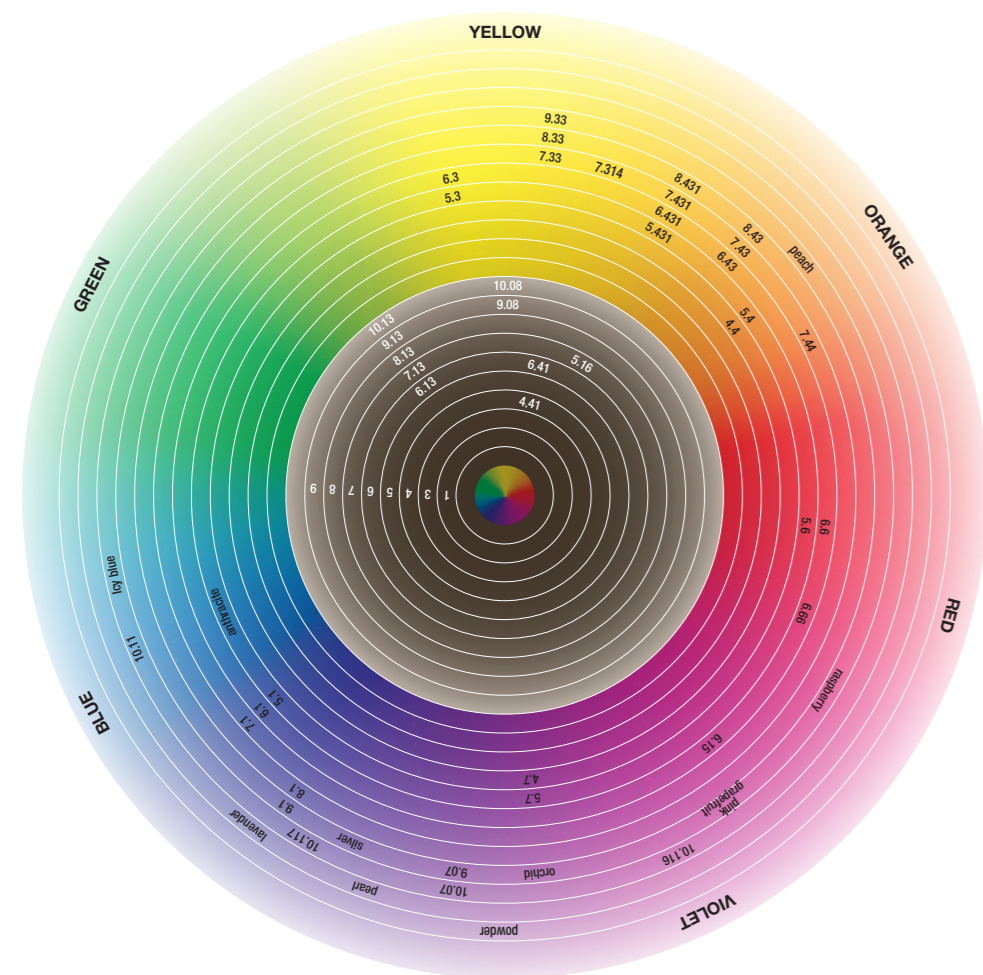


milk
shake[®]
smoothies

newton's disk



REFERENCE					
.0 N	NATURAL	.3 G	GOLDEN	.6 R	RED
.1 A	ASH	.4 C	COPPER	.7 V	VIOLET
.13 AG	BEIGE	.5 M	MAHOAGANY	.8 B	MOKA

EN

Conditioning semi-permanent colour for hair.

Tone on tone conditioning colouring cream with milk proteins, organic honey and sunflower oil, amino acid complex & fruit extracts.
milk_shake[®] smoothies, for maximum conditioning and hair colour. A gentle and conditioning semi-permanent colour with vibrant pigments that give incredible shine. **milk_shake[®] smoothies** contains milk proteins, organic honey and sunflower oil, amino acid complex, **Integrity 41[®]** and fruit extracts that give condition and softness to hair and scalp. **milk_shake[®] smoothies** has a pleasant fragrance and leaves hair healthy, shiny, conditioned and coloured. **milk_shake[®] smoothies** gives perfect versatility to professional colour services whilst respecting the hair's health and integrity. It's ideal for shiny, natural and durable grey blending. It gives gloss and shine to natural bases, gives tone and blends colour contrasts or highlights, it's ideal to even out hair colour or correct an existing colour, and offers an easy colouring service without too much commitment. **milk_shake[®] smoothies**, a product created to bring out the hair's beauty and increase confidence within professional colouring services. Only to be used in combination with the specific developers: **milk_shake[®] light activating emulsion** for tone on tone colouring without any regrowth effect, or **milk_shake[®] activating emulsion** for tone on tone colouring and grey coverage (up to 50%), or **milk_shake[®] intensive activating emulsion** for a more intense grey coverage (up to 75%) and for more intense tones.

THE ANALYSIS:

- Determine the hair's natural level and condition.
- Determine the desired result and choose the suitable shade.
- Verify the possibility to obtain the desired result using the colour chart.

MIXING RATIO: in a non-metallic bowl, mix 1 part of **milk_shake[®] smoothies conditioning semi-permanent colour** + 1.5 parts of **milk_shake[®] activating emulsion** (e.g. 50 ml **milk_shake[®] smoothies** + 75 ml **milk_shake[®] activating emulsion**).

APPLICATION:

- **Virgin application:** wash with **milk_shake[®] deep cleansing shampoo**, apply the formula evenly from roots to ends on clean and dry hair. Processing time: 20 to 30 minutes. In the case of very porous or fine hair decrease the processing time.
- **Retouch application:** apply mixture on visible regrowth first. Processing time: 25 to 30 minutes. 5 minutes before the processing time is complete, work product through lengths and ends. In the case of very porous or fine hair decrease the processing time.
- Emulsify with a small amount of water then rinse out thoroughly.
- Apply **milk_shake[®] colour specific acid colour sealer**, leave in for 2-3 minutes, do not rinse and proceed with **milk_shake[®] colour specific colour sealing shampoo & colour specific colour sealing conditioner**.

IT

Colore condizionante semi-permanente per capelli.

Crema colorante condizionante tono su tono alle proteine del latte, miele organico e olio di girasole, amino acid complex ed estratti di frutta.
milk_shake[®] smoothies, il massimo condizionamento e la massima espressione del colore. Una colorazione semi-permanente delicata e trattante, che dona incredibile lucentezza e colori vibranti. **milk_shake[®] smoothies** contiene una base condizionante alle proteine del latte, miele organico e olio di girasole, amino acid complex, **Integrity 41[®]** ed estratti di frutta che leniscono e condizionano cute e capelli. **milk_shake[®] smoothies** è piacevolmente profumato e lascia i capelli lucenti, vitali, condizionati ed intensamente colorati. **milk_shake[®] smoothies**, grazie alla sua formulazione, permette un'ottima versatilità nei servizi di colorazione col massimo rispetto dell'integrità della struttura capillare. Un prodotto ideale per nascondere i primi capelli bianchi, donare un'ottima mascheratura luminosa, duratura e molto naturale. Ideale per illuminare la base naturale con riflessi intensi, lucenti e naturali, per uniformare o riprendere una colorazione esistente, per sfumare meches o contrasti, per avvicinare al servizio colorazione i clienti che cercano un colore semplice da mantenere. **milk_shake[®] smoothies**, un prodotto creato per valorizzare la bellezza dei capelli e fidelizzare i clienti al servizio colore professionale. Utilizzare solo in miscelazione con i rivelatori specifici: **milk_shake[®] light activating emulsion** per colorazioni tono su tono senza effetto ricrescita, **milk_shake[®] activating emulsion** per colorazioni tono su tono e mascheratura dei primi capelli bianchi (fino al 50%) o **milk_shake[®] intensive activating emulsion** per una copertura dei capelli bianchi più intensa (fino al 75%) e per riflessature più decise.

DIAGNOSI:

- Stabilire il livello naturale dei capelli e le condizioni del capello.
- Stabilire il risultato desiderato e scegliere la nuance più adatta.
- Verificare sulla cartella colori la possibilità di raggiungere il risultato desiderato.

MISCELAZIONE: in una ciotola non metallica, miscelare 1 parte di **milk_shake[®] smoothies conditioning semi-permanent colour** + 1.5 di **milk_shake[®] activating emulsion** (es. 50 ml di **milk_shake[®] smoothies** + 75 ml di **milk_shake[®] activating emulsion**).

APPLICAZIONE:

- **Applicazione vergine:** lavare con **milk_shake[®] deep cleansing shampoo**, applicare la miscela sui capelli asciutti e puliti contemporaneamente dalle radici alle punte. Lasciare in posa da 20 a 30 minuti. Se i capelli sono molto porosi o fini ridurre il tempo di posa di qualche minuto.
- **Applicazioni successive:** applicare la miscela sulla ricrescita e lasciare in posa da 25 a 30 minuti. 5 minuti prima del termine allungare la rimanenza di prodotto sulle lunghezze e punte. Se i capelli sono trattati, ridurre il tempo di posa di qualche minuto.
- Emulsionare quindi risciacquare abbondantemente.
- Applicare **milk_shake[®] colour specific acid colour sealer**, lasciare in posa per 2-3 minuti e senza risciacquare, lavare delicatamente con **milk_shake[®] colour specific colour sealing shampoo** e applicare **colour specific colour sealing conditioner**.

FR

Coloration conditionnante semi-permanente pour cheveux.

Coloration en crème conditionnante ton sur ton avec protéines de lait, du miel organique et de l'huile de tournesol, amino acides et extraits de fruits.
milk_shake[®] smoothies, le soin et l'expression de la couleur au maximum. Une coloration semi-permanente douce contenant des pigments vibrants qui apportent une incroyable brillance. La coloration **milk_shake[®] smoothies** contient des protéines de lait, du miel organique et de l'huile de tournesol, un complexe d'acides-amino, **Integrity 41[®]** et des extraits de fruits qui apportent douceur et soin aux cheveux et au cuir chevelu. **milk_shake[®] smoothies** a un parfum très plaisant et laisse les cheveux légers, brillants et sains avec une couleur vibrante. La coloration **milk_shake[®] smoothies** est un outil parfait pour de nombreux services de coloration professionnelle, tout en respectant la santé et l'intégrité des cheveux. Elle est idéale pour la brillance, et une couverture naturelle et durable des premiers cheveux blancs. Elle apporte brillance et effet gloss aux bases naturelles, tonalise des mèches ou une décoloration, uniformise une coloration, et offre un service de coloration facile et sans entretien. **milk_shake[®] smoothies** une coloration créé pour révéler la beauté des cheveux et augmenter la confiance pour le service de coloration professionnelle. Utilisation uniquement en combinaison avec les révélateurs spécifiques: **milk_shake[®] light activating emulsion** pour une coloration ton sur ton sans effet de repousse, ou **milk_shake[®] activating emulsion** pour des tons sur tons et la couverture des premiers cheveux blancs (jusqu'à 50%), ou le révélateur **milk_shake[®] intensive activating emulsion** pour une meilleure et plus intense couverture des cheveux blancs (jusqu'à 75%) ou des reflets et une tenue supérieure.

LE DIAGNOSTIC:

- Déterminer la hauteur de ton naturel et l'état des cheveux.
- Déterminer la nuance désirée et choisir la formule adéquate.
- Vérifier la possibilité d'obtenir le reflet désiré grâce au nuancier.

MÉLANGE: dans un bol non métallique, mélanger 1 part de coloration **milk_shake[®] smoothies conditioning semi-permanent colour** + 1.5 **milk_shake[®] activating emulsion** (ex: 50 ml coloration **milk_shake[®] smoothies semi-permanent colour** + 75 ml **milk_shake[®] activating emulsion**).

APPLICATION:

- **Sur une chevelure vierge** laver avec **milk_shake[®] deep cleansing shampoo**, appliquer le mélange des racines aux pointes sur cheveux propres et secs. Temps de pose de 20 à 30 minutes. En cas de cheveux poreux, réduire le temps de pose et surveiller l'évolution.
- **Reprise des racines:** appliquer sur les repousses visibles en premier, temps de pose de 25 à 30 minutes, puis allonger sur les longueurs et pointes. En cas de cheveux très poreux ou fins, réduire le temps de pose.
- Emulsionner sans eau, puis ajouter de l'eau au fur et à mesure et rincer abondamment.
- Poursuivre avec l'application de **milk_shake[®] colour specific acid colour sealer**, laisser poser 2-3 minutes puis sans rincer, laver délicatement avec **milk_shake[®] colour specific colour sealing shampoo & colour specific colour sealing conditioner**.

ES

Coloración semi-permanente para el cabello.

Crema colorante acondicionante tono sobre tono con proteínas de leche, miel orgánico y aceite de girasol, complejo de aminoácidos y extractos de frutas.
milk_shake[®] smoothies, el máximo acondicionamiento y la máxima expresión del color. Una coloración semi-permanente delicada y tratante, que aporta un brillo increíble y colores vibrantes. **milk_shake[®] smoothies**, contiene una base acondicionante con proteínas de leche, miel orgánico y aceite de girasol, complejo de aminoácidos, **Integrity 41[®]** y extractos de frutas que calman y acondicionan la piel y el cabello. **milk_shake[®] smoothies**, está placenteramente perfumado y deja el cabello brillante, vital, acondicionado e intensamente coloreado. **milk_shake[®] smoothies**, gracias a su formulación permite una óptima versatilidad en los servicios de coloración con el máximo respeto de la integridad de la estructura capilar y con la consiguiente belleza del cabello. Un producto ideal para esconder las primeras canas, y aportar una óptima cobertura luminosa, duradera y muy natural. Ideal para iluminar la base natural con reflejos intensos, brillantes y naturales, para uniformar o para esconder una coloración existente, para difuminar mechas o contrastes, para acercar el servicio de coloración a clientes que buscan un color simple de mantener. **milk_shake[®] smoothies**, un producto creado para potenciar la belleza del cabello y fidelizar al cliente al servicio de coloración profesional. Utilizar sólo mezclando con los reveladores específicos: **milk_shake[®] light activating emulsion** para coloraciones tono sobre tono sin efecto raíz, o **milk_shake[®] activating emulsion**, para coloraciones tono sobre tono y para la cobertura de las primeras canas (hasta 50%), o **milk_shake[®] intensive activating emulsion**, para una cobertura más intensa de las canas (hasta 75%) y para reflejos más decididos.

EL DIAGNÓSTICO:

- Establecer el nivel natural del cabello y las condiciones del capello.
- Establecer el resultado deseado y escoger los matices más adaptados.
- Verificar sobre la cartela de colores la posibilidad de conseguir el resultado deseado.

MEZCLA: en un bol no metálico, mezclar 1 parte de **milk_shake[®] smoothies conditioning semi-permanent colour** + 1.5 **milk_shake[®] activating emulsion** (ej. 50 ml **milk_shake[®] smoothies** + 75 ml **milk_shake[®] activating emulsion**).

APLICACIÓN:

- **Aplicación virgen:** lavar con **milk_shake[®] deep cleansing shampoo**, aplicar la mezcla sobre el cabello seco y limpio al mismo tiempo de la raíz a las puntas. Dejar actuar 20-30 minutos. Si el cabello es muy poroso o fino reducir el tiempo de pose algunos minutos.
- **Aplicaciones sucesivas:** aplicar la mezcla sobre el crecimiento y dejar actuar de 25 a 30 minutos. 5 minutos antes de terminar emulsionar la mezcla sobre el largo y las puntas del cabello. Si el cabello está tratado químicamente, reducir el tiempo de pose algunos minutos.
- Emulsionar y aclarar abundantemente.
- Aplicar **milk_shake[®] colour specific acid colour sealer** y dejar actuar 2-3 minutos y sin aclarar, proceder delicadamente con el lavado con **milk_shake[®] colour specific colour sealing shampoo & colour specific colour sealing conditioner**.



milk
shake[®]
smoothies

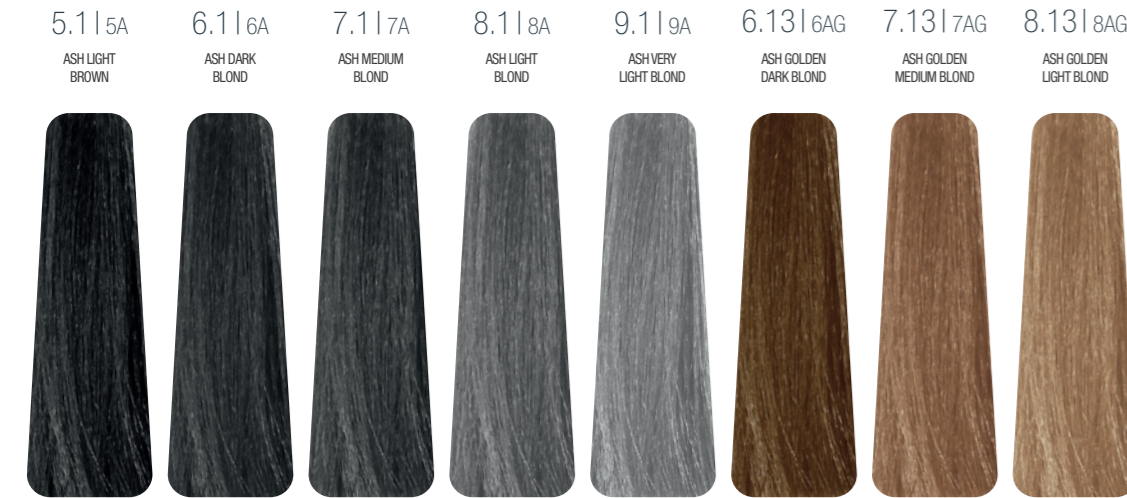
conditioning
semi-permanent colour



NATURAL



ASH



PURE GOLD



COPPER



RED



EXOTIC



VIOLET



CHOCOLATE



SENSUAL WARMS



COLD BLONDIE



COLD BLONDIE



SPECIAL



PASTEL



INTENSIFIERS



NUANCE	APPLICATION LEVEL	NUANCE	APPLICATION LEVEL	NUANCE	APPLICATION LEVEL
1 BLACK	1, 2, 3, 4, 5, G	7.43 COPPER GOLDEN MEDIUM BLOND	3, 4, 5, 6, 7, 8, 9	10.116 INTENSE ASH RED PLATINUM LIGHTEST BLOND	9, 10, G
3 DARK BROWN	3, 4, 5, G	7.44 INTENSE COPPER MEDIUM BLOND	7, 8, 9	10.117 INTENSE ASH VIOLET PLATINUM LIGHTEST BLOND	9, 10, G
4 MEDIUM BROWN	4, 5, 6, G	8.43 COPPER GOLDEN LIGHT BLOND	8, 9, 10	9.13 ASH GOLDEN VERY LIGHT BLOND	8, 9, 10
5 LIGHT BROWN	5, 6, 7, G	5.6 RED LIGHT BROWN	4, 5, 6, 7	10.13 ASH GOLDEN PLATINUM LIGHTEST BLOND	9, 10, G
6 DARK BLOND	6, 7, 8, G	6.6 RED DARK BLOND	5, 6, 7, 8	PEARL	10, G
7 MEDIUM BLOND	7, 8, 9, G	6.66 INTENSE RED DARK BLOND	5, 6, 7, 8	POWDER	9, 10, G
8 LIGHT BLOND	8, 9, 10, G	4.7 VIOLET MEDIUM BROWN	3, 4, 5, 6, 7	SILVER	G
9 VERY LIGHT BLOND	9, 10, G	5.77 INTENSE VIOLET LIGHT BROWN	4, 5, 6, 7	ANTHRACITE	G
5.1 ASH LIGHT BROWN	5, 6, 7, G	5.431 COPPER GOLDEN ASH LIGHT BROWN	4, 5, 6, 7	PEARL	G
6.1 ASH DARK BLOND	6, 7, 8, G	6.431 COPPER GOLDEN ASH DARK BLOND	5, 6, 7, 8	POWDER	G
7.1 ASH MEDIUM BLOND	7, 8, 9, G	7.431 COPPER GOLDEN ASH MEDIUM BLOND	6, 7, 8, 9, 10	SILVER	G
8.1 ASH LIGHT BLOND	8, 9, 10, G	8.431 COPPER GOLDEN ASH LIGHT BLOND	7, 8, 9, 10	ANTHRACITE	G
9.1 ASH VERY LIGHT BLOND	9, 10, G	4.41 COPPER ASH MEDIUM BROWN	3, 4, 5	PEARL	G
6.13 ASH GOLDEN DARK BLOND	5, 6, 7	5.16 ASH RED LIGHT BROWN	4, 5, 6	POWDER	G
7.13 ASH GOLDEN MEDIUM BLOND	6, 7, 8	6.41 COPPER ASH DARK BLOND	5, 6, 7	SILVER	G
8.13 ASH GOLDEN LIGHT BLOND	7, 8, 9	6.15 ASH MAHOGANY DARK BLOND	5, 6, 7	ANTHRACITE	G
5.3 GOLDEN LIGHT BROWN	5, 6, 7	7.314 GOLDEN ASH COPPER MEDIUM BLOND	6, 7, 8	PEARL	G
6.3 GOLDEN DARK BLOND	6, 7, 8	9.07 NATURAL VIOLET VERY LIGHT BLOND	8, 9, 10, G	POWDER	G
7.33 INTENSE GOLDEN MEDIUM BLOND	7, 8, 9	9.08 NATURAL MOKA VERY LIGHT BLOND	8, 9, 10, G	SILVER	G
8.33 INTENSE GOLDEN LIGHT BLOND	8, 9, 10	10.07 NATURAL VIOLET PLATINUM LIGHTEST BLOND	9, 10, G	ANTHRACITE	G
9.33 INTENSE GOLDEN VERY LIGHT BLOND	9, 10	10.08 NATURAL MOKA PLATINUM LIGHTEST BLOND	9, 10, G	PEARL	G
4.4 COPPER MEDIUM BROWN	3, 4, 5, 6	10.11 INTENSE ASH PLATINUM LIGHTEST BLOND	9, 10, G	POWDER	G
5.4 COPPER LIGHT BROWN	5, 6, 7			SILVER	G
6.43 COPPER GOLDEN DARK BLOND	6, 7, 8			ANTHRACITE	G